

State of Wyoming Corner Record

(In compliance with the CORNER PERPETUATION AND FILING ACT, Wyoming Statutes, 1997, Section 33-29-140, et. seq., and the Rules and Regulations of the Board of Registration for Professional Engineers and Professional Land Surveyors)

Reverse side of this form may be used if more space is needed.

Record of original survey and citation of source of historical information (if corner is lost or obliterated). Description of corner monumentation evidence found and/or monument and accessories established to perpetuate the location of this corner. Sketch of relative location of monument, accessories, and reference points with course and distance to adjacent corner(s) (if determined in this survey). Method and rationale for reestablishment of lost or obliterated corner.

G.L.O. Record: Unknown

Subsequent Records: Wyoming Department of Transportation Plan Sheets for Project DA-WR 1 (1) indicate this corner to be @ Station 172+95.0 and 59.0' from CL to Sec. Corner.

Found: Wyoming Department of Transportation Right of Way Markers along the west right of way line of Wyoming State Highway 222. At station 199+42.9 as noted on plan sheets above, I found a 1" Iron Pipe at the 1/4 Corner to Sections 9 and 10 and the east WCCR stone set on the original survey of Fort Francis E. Warren Access Road (Branch C.R. No. 9) by the Laramie County Engineer.

Set: From the above evidence I set a No.6 x 30" rebar with a marked 3 1/4" Aluminum Cap as noted below. This corner was reestablished at the proportionate distance between found corners north and south, due to centeline stationing discrepancies, and 159.00' east of existing right of way markers. Set a 5 1/2' steel fence post witness 1' north.

T13N R67W
S4 | S3
—+—
S9 | S10
1998
PLS 2927

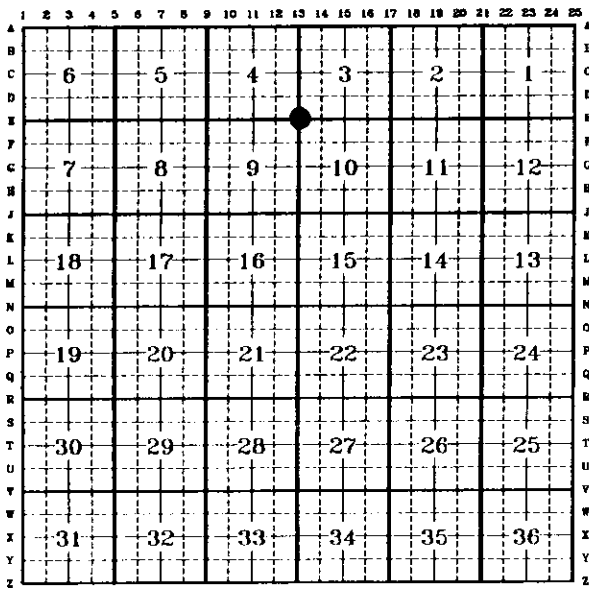
Basis of Bearings for the below ties are as noted on Wyoming Corner Record A-9 filed by me.

<u>POINT IDENTIFICATION</u>	<u>MONUMENTATION</u>	<u>BEARING</u>	<u>DISTANCE</u>
W.D.O.T., R.O.W. Marker	Standard concrete and Brass Disc	N11°22'28"E	206.91'
W.D.O.T., R.O.W. Marker	Standard concrete and Brass Disc	N37°52'25"W	257.47'

See back of this sheet for measurements to adjacent corners.

Date of Field Work: Dec. 7, 1998 Office Reference: A.V.I. Job No. 2100

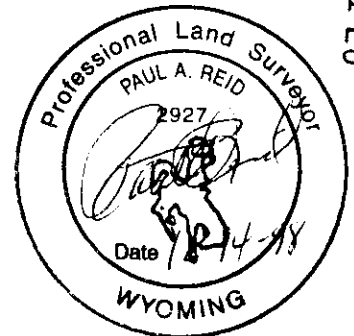
CROSS INDEX DIAGRAM



Firm/Agency, Address

Paul A. Reid, A.V.I.p.c.
2035 Westland Road
Cheyenne, WY 82001
Telephone Number:
(307)-637-6017

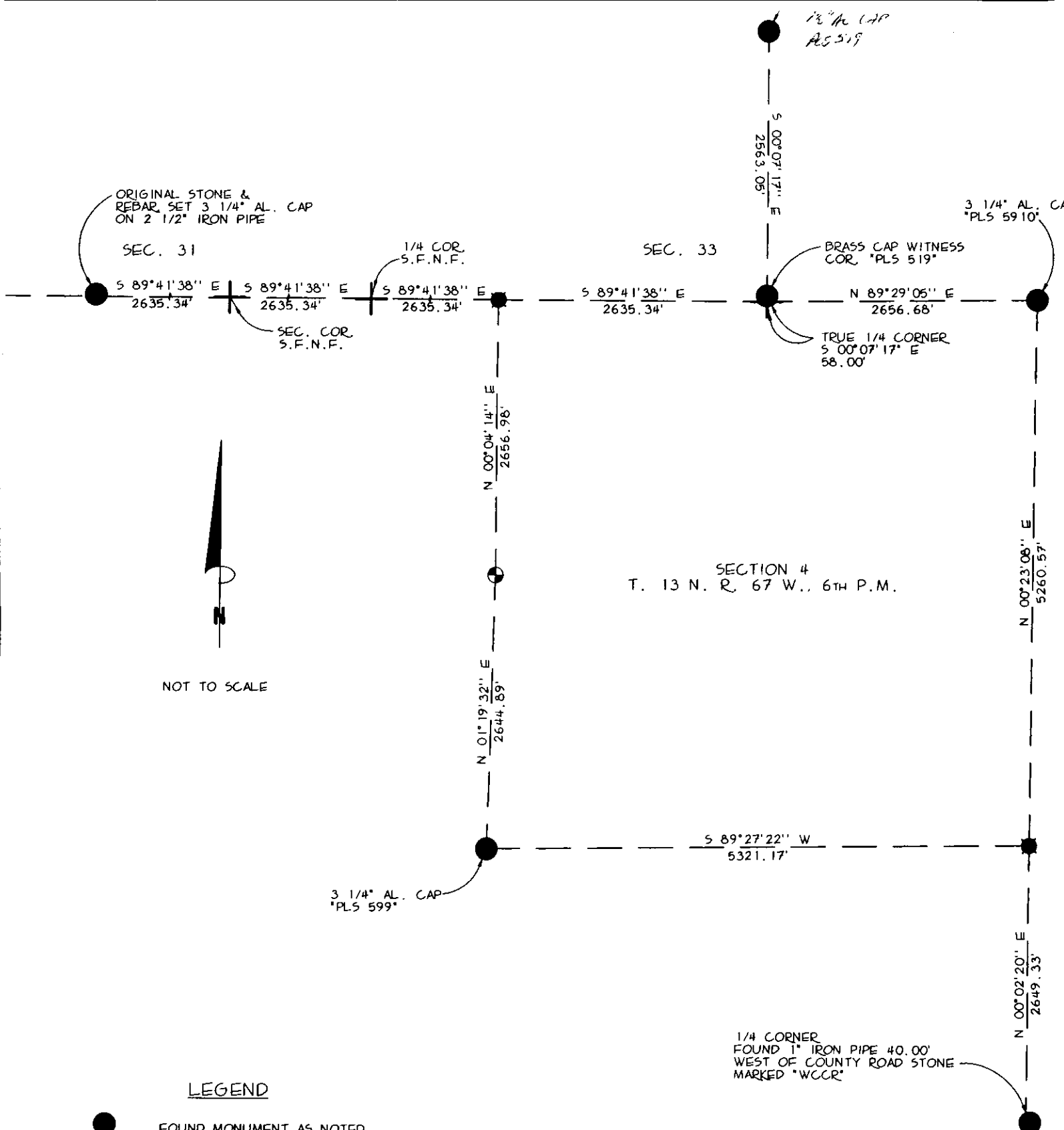
This corner record was prepared by me or under my direction and supervision.



Corner Name: SE Cor. Section: 4 T 13N R 67W 6th P.M. Cross-Index No.: E-13

240322

98 DEC 14 AM 11 28



LEGEND

- FOUND MONUMENT AS NOTED
- ⊕ DIMENSION POINT, NOTHING FOUND
NOTHING SET
- SET No. 6 REBAR W/ 3 1/4" AL. CAP. *PLS 2927*
- ⊙ FOUND ORIGINAL STONE
RESET W/ 3 1/4" AL. CAP
- S.F.N.F. CORNER SEARCHED FOR
AND NOT FOUND

SKETCH OF SECTION 4
BOUNDARY SURVEY
SEC. 4, T. 13 N., R. 67 W., 6TH P.M.
LARAMIE COUNTY, WYOMING